

ALIGNMENT CHART

Step	Component	Signal Generator Coupling	Signal Frequency	Band	Receiver Test Point	Adjustment	Notes
1	0.1 mfd. capacitor	High side to front stator section of tuning cap. Low side to chassis.	455 kc	A	Tuning cap. fully open	S1,S2,S3,S4,S5, S6,	Adjust for maximum audio output at speaker voice coil. Use just enough signal generator output to obtain a 50 mw audio level.
2	See step 1.	See step 1.	455 kc	A	See step 1.	S9	With the CW/AM switch set at CW, adjust S-9 for zero beat.
3	300 ohm carbon resistor	High side to "A1" on antenna strip. Jumper connected between "A2" and "G"	1500 kc 600 kc	A	1500 kc 600 kc	*A,B *C	Adjust for maximum output as in step 1.
4	See step 3.	See step 3.	6 mc	B	6 mc	*D,E	Adjust for maximum output as in step 1.
5	See step 3.	See step 3.	15 mc	C	15 mc	*F,G	Adjust for maximum output as in step 1.
6	See step 3.	See step 3.	30 mc	D	30 mc	*I,H	Adjust for maximum output as in step 1.
7	See step 3.	See step 3.	52 mc	E	52 mc	*J,K	Adjust for maximum output as in step 1.

*Note - Calibration adjustments.

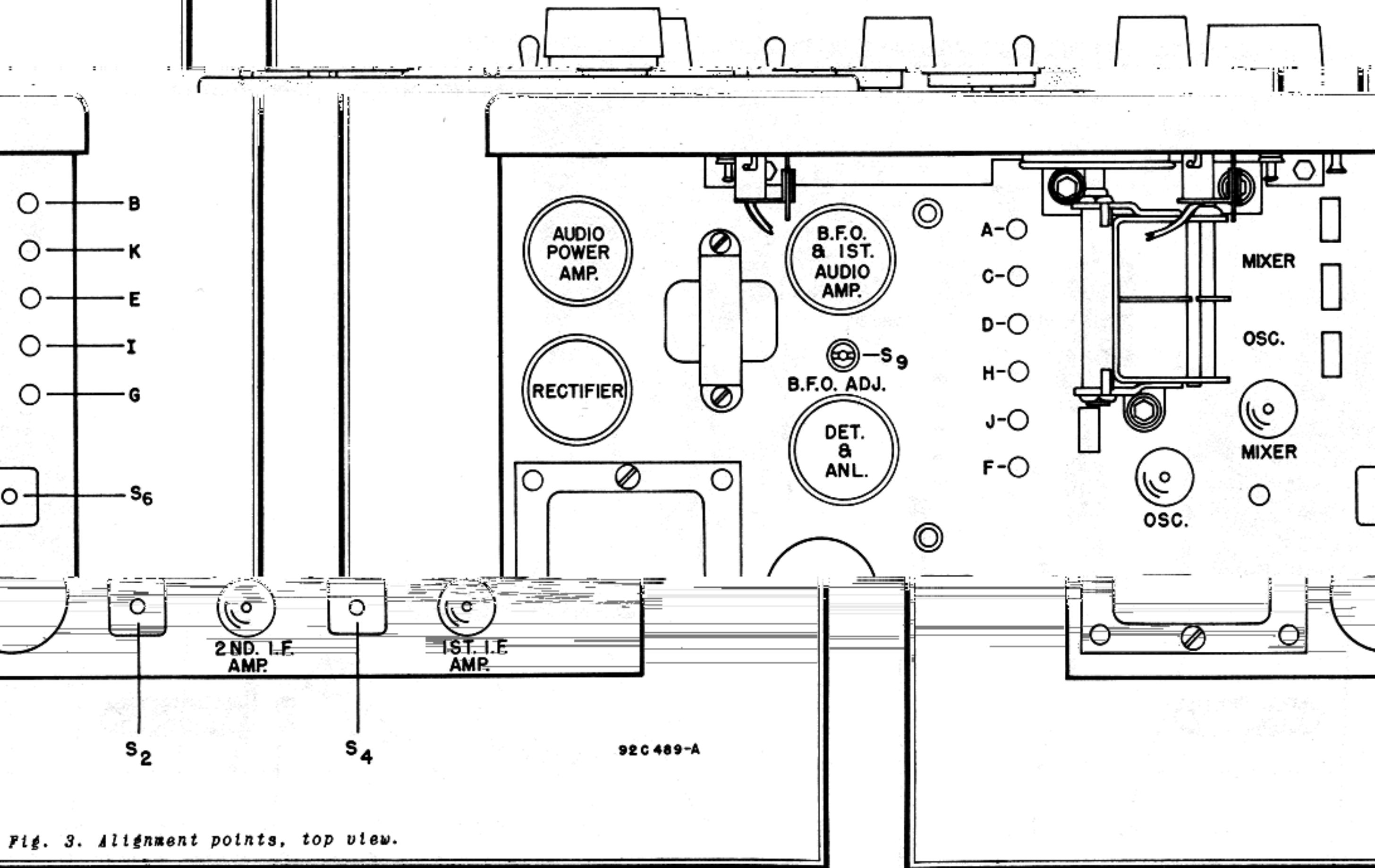


Fig. 3. Alignment points, top view.

MODELS S-53-A,
S-53-AU

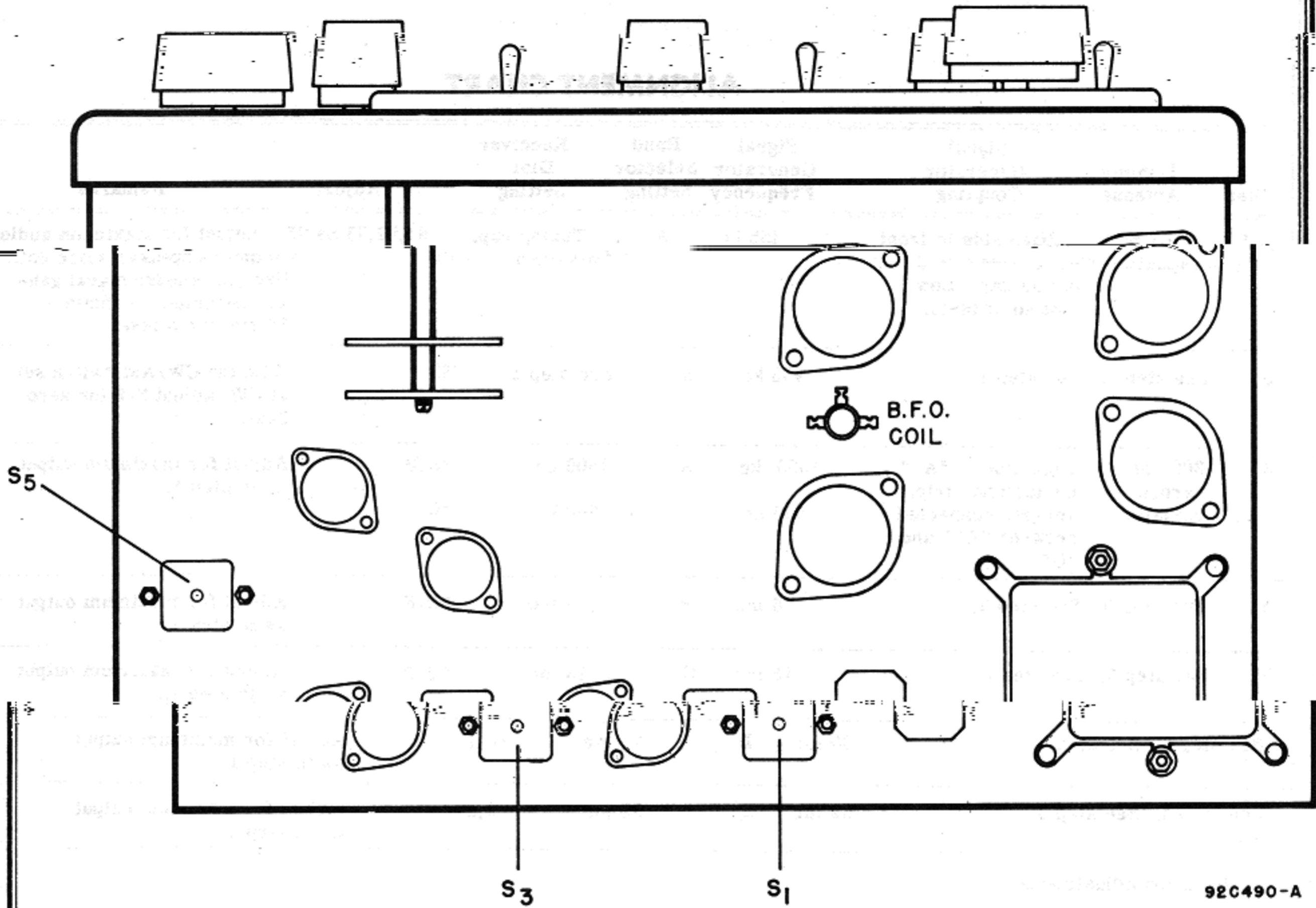


Fig. 4. Alignment points, bottom view.

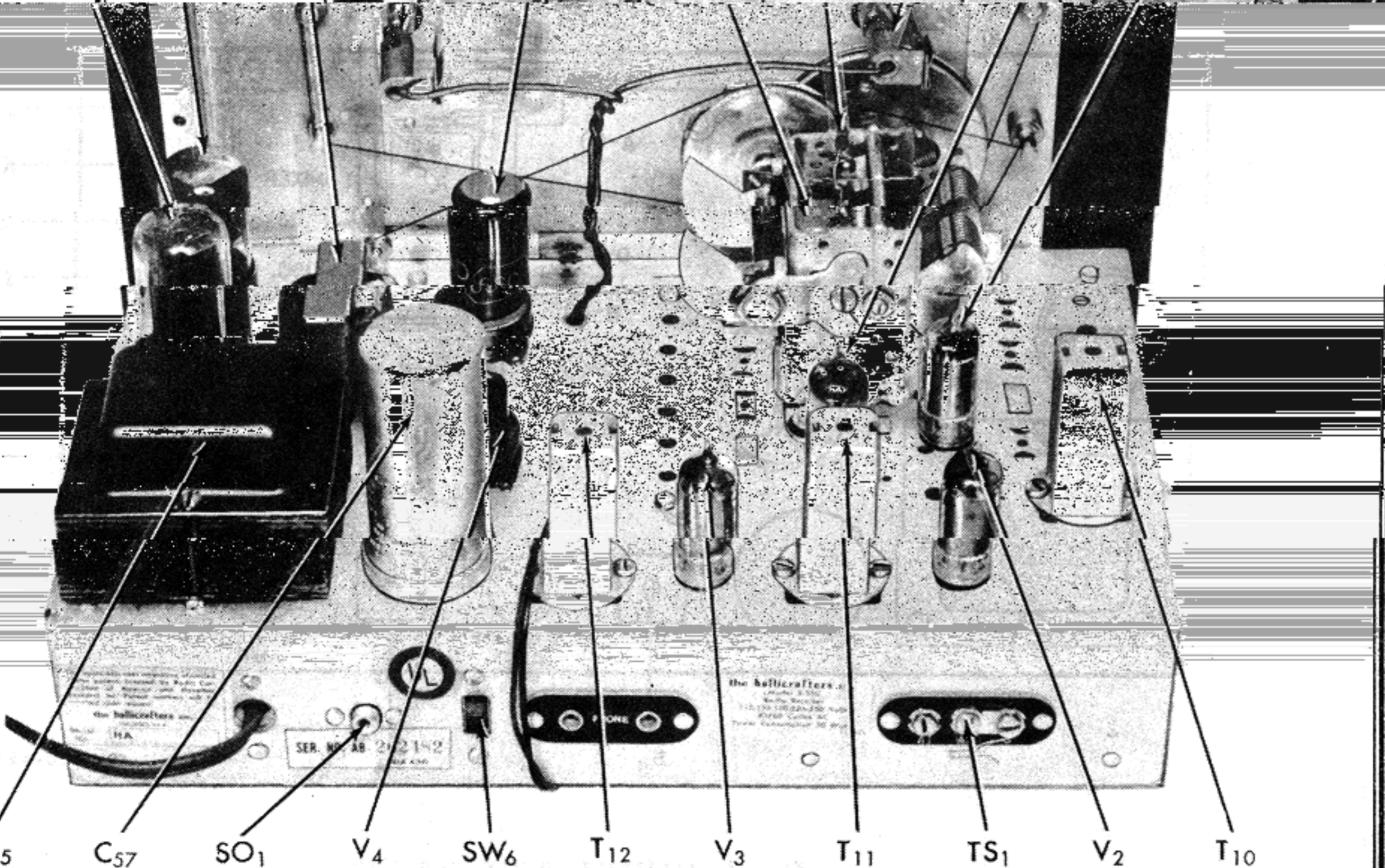
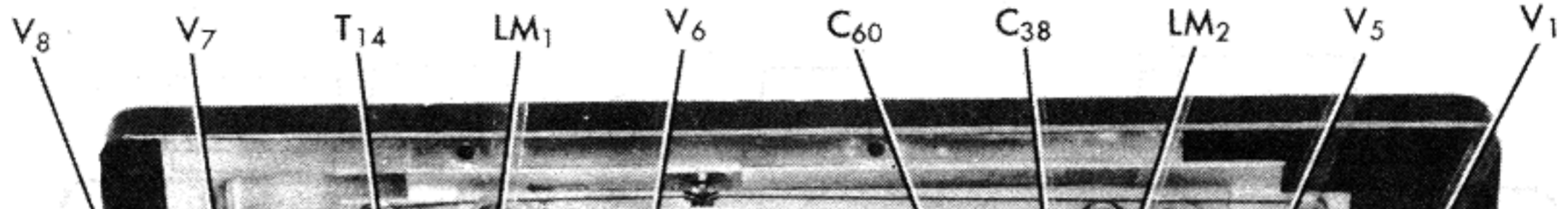
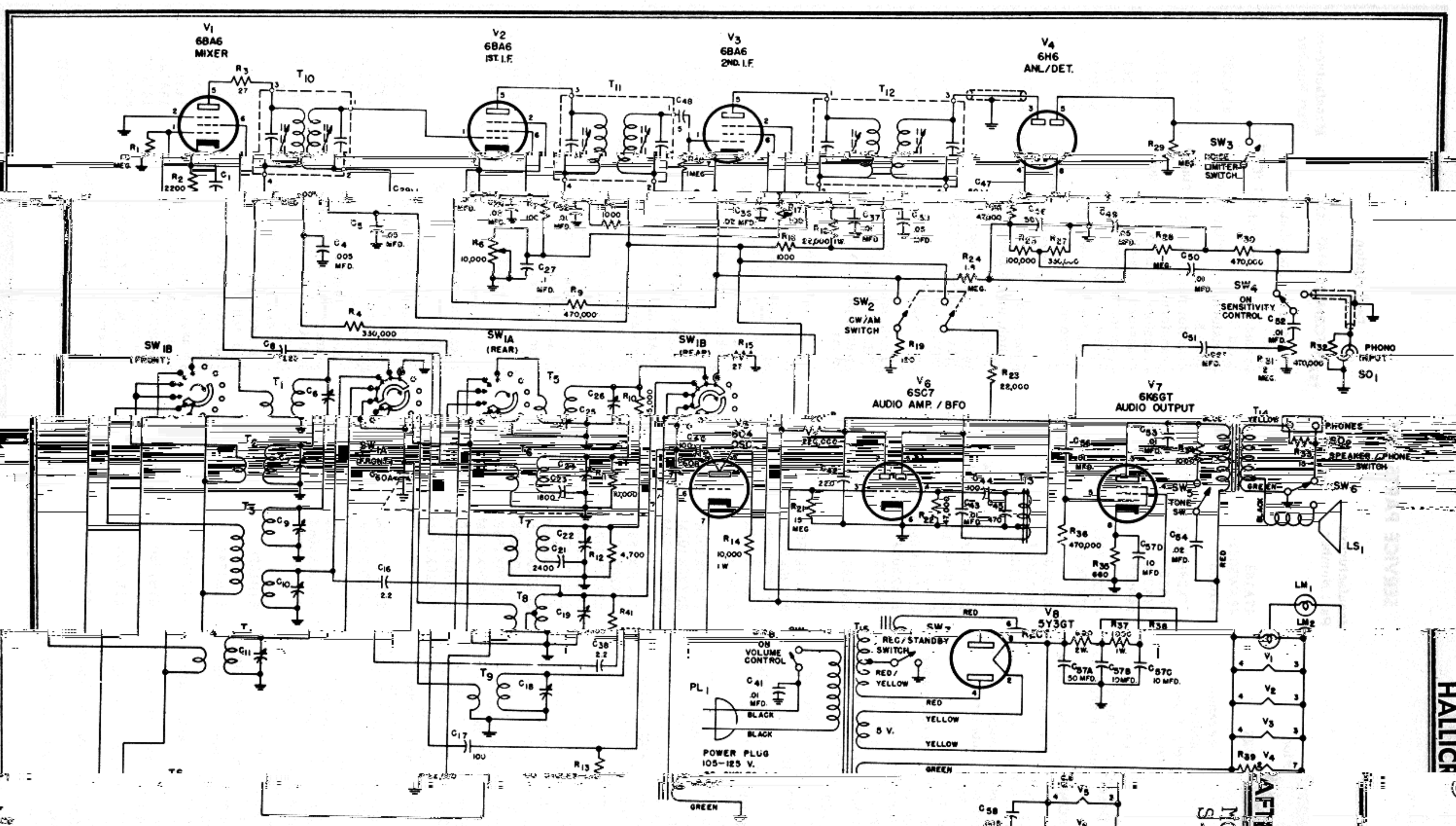


Fig. 5. Component location, top view.

92X1103



BAND SELECTOR POSITION	SWITCH SW 1 RANGE
A	540-1650 KC.
B	2.5-6.6 MC.
C	6-11 MC.
D	13.5-32 MC.
E	47-55 MC.

NOTE:
SWITCH SHOWN IN POSITION E.

RESISTOR VALUES ARE IN OHMS.
CAPACITOR VALUES ARE IN MMF UNLESS OTHERWISE SPECIFIED.

LAST RESISTOR SYMBOL — R-41
LAST CAPACITOR SYMBOL — C-60

890346-A

Fig. 9. Schematic diagram.

AFTERS PAGE 21-19
MODELS S-53-A,
S-53-AU

HALLICOR

MODELS S-53-A,
S-53-AU

SERVICE PARTS LIST

Ref. No.	Description	Manufacturers Part Number	Ref. No.	Description	Manufacturers Part Number
CONDENSERS			TRANSFORMERS AND COILS (Cont.)		
C-1,4,58	.005 mfd. 450 V., ceramic	47A168	T-7	Transformer, oscillator stage, band C	51A1237
C-5,39,49	.05 mfd. 400 V., tubular	46AW503J	T-8	Transformer, oscillator stage, band D	51B1238
C-6,7,9,10,11	Trimmer assembly, 5 sections, antenna stage	44B355	T-9	Transformer, oscillator stage, band E	51B1239
C-8,42	220 mmf. 500 V., mica	47X20B221K	T-10,11	Transformer, 1st and 2nd IF	50C241
C-16,38,	2.2 mmf. 500 V., ceramic	47A160-4	T-12	Transformer, 3rd IF	50C242
C-17,40,44	100 mmf. 500 V., ceramic	47A086	T-13	Transformer, BFO	54B043
C-18,19,22,24,25,26	Trimmer assembly, 6 sections, oscillator stage	44B388	T-14	Transformer, audio output	55B107
C-23	1800 mmf. 2% 500 V., silver mica	47X20C182G	T-15	Transformer, power (Standard) (Used on S-53-A)	52C164
C-27	.1 mfd. 200 V., tubular	46AU104J	T-15	Transformer, power (Universal) (Used on S-53-AU)	52C165
C-28,36,54	.02 mfd. 600 V., tubular	46AY203J	SWITCHES		
C-29,32,37,43,50,52,53,56	.01 mfd. 600 V., tubular	46AZ103J	SW-1	Band switch assembly	60B323
C-41	.01 mfd. 600 V., molded paper	46AC103J	SW-2	Switch, toggle DPST, CW/AM control	60A285
C-45	470 mmf. 500 V., mica	47X20B471J	SW-3,5,7	Switch, toggle, SPST, STANDBY/REC., NOISE LIMITER & TONE control	60A138
C-46,47	50 mmf. 500 V., ceramic	47A091	SW-4	Switch, part of SENSITIVITY control, R-6	
C-48	5 mmf. 500 V., ceramic	47X20UK050K	SW-6	Switch, slide, SPDT, SPEAKER/PHONE control	60A243
C-51	.003 mfd. 600 V., tubular	46AZ302J	SW-8	Switch, part of VOLUME control R-31	
C-52	50-10-15 mfd. 350-500 V., electrolytic	48C198	PLUGS AND SOCKETS		
C-60	Tuning condenser, 2 section	48C198	PL-1	Line cord and plug	87A078
RESISTORS			SO-1	Receptacle, phono	36A041
R-1,24	1.8 megohms 1/2 watt, carbon	23X20X185M	SO-2	Receptacle, headphone jack	88A071
R-2	2200 ohms 1/2 watt, carbon	23X20X222M	TUBES, RECTIFIERS AND LAMPS		
R-3,15,	22,000 ohms 1/2 watt, carbon	23X20X270M	V-1,2,3	6BA6, mixer, 1st & 2nd IF amplifier	90X6BA6
R-4,27	330,000 ohms 1/2 watt, carbon	23X20X334K	V-4	6H6, detector & ANL	90X6H6
R-6	10,000 ohms, variable SENSITIVITY control	25B603	V-5	6C4, oscillator	90X6C4
R-7,17	100 ohms 1/2 watt, carbon	23X20X101K	V-6	6SC7, audio amplifier & BFO	90X6SC7
R-8,16,34	1000 ohms 1/2 watt, carbon	23X20X102M	V-7	6K6-GT, power amplifier	90X6K6-GT
R-9,30,32,36	470,000 ohms 1/2 watt, carbon	23X20X474M	V-8	5Y3-GT, rectifier	90X5Y3-GT
R-10	15,000 ohms 1/2 watt, carbon	23X20X153K	LM-1,2	Lamp, 6-8 V., 250 ma., Mazda#44	39A003
R-11	10,000 ohms 1/2 watt, carbon	23X20X103K	MISCELLANEOUS		
R-12	4700 ohms 1/2 watt, carbon	23X20X472K	TS-1	Terminal strip, antenna	88A032
R-13,23	22,000 ohms 1/2 watt, carbon	23X20X223M	SENSITIVITY and VOLUME controls		
R-14	10,000 ohms 1 watt, carbon	23X30X103K	Knob, BANDSPREAD & general coverage controls		
R-18	22,000 ohms 1 watt, carbon	23X30X223M	Shaft, tuning drive		
R-19	120 ohms 1/2 watt, carbon	23X20X121M	"C" washer (tuning-drive shaft)		
R-20	220,000 ohms 1/2 watt, carbon	23X20X224K	Spring, dial cord		
R-21	15 megohms 1/2 watt, carbon	23X20X156K	Dial cord		
R-22,26	47,000 ohms 1/2 watt, carbon	23X20X473M	Plate, dial		
R-25	100,000 ohms 1/2 watt, carbon	23X20X104K	Pointer, general coverage dial		
R-28,40	1 megohm 1/2 watt, carbon	23X20X105M	Pointer, band spread dial		
R-29	2.7 megohms 1/2 watt, carbon	23X20X275M	Dial Glass (Calibrated)		
R-31	2 megohms, variable, VOLUME control	25B602	Gasket, dial glass		
R-33	15 ohms 1/2 watt, carbon	23X20X150M	Clip, dial glass mtg.		
R-35	680 ohms 1/2 watt, carbon	23X20X681K	Pad, dial clip		
R-37	680 ohms 2 watts, carbon	23X40X681M	Pad, felt (round disc)		
R-38	1000 ohms 1 watt, carbon	23X30X102M	Pad, sponge rubber		
R-39	6.8 ohms 1 watt, carbon	23X30X068K	Mounting feet, rubber		
R-41	3300 ohms 1/2 watt, carbon	23X20X332K	Speaker, P.M.		
TRANSFORMERS AND COILS			TRANSFORMERS AND COILS (Cont.)		
T-1	Transformer, antenna stage, band A	51B1028	IS-1		
T-2	Transformer, antenna stage, band B	51B1244	T-5	Transformer, oscillator stage, band A	51B1235
T-3	Transformer, antenna stage, band C & D	51B1026	T-6	Transformer, oscillator stage, band B	51B1236
T-4	Transformer, antenna stage, band E	51B1030	Knob, BANDSPREAD & general coverage controls		