

MENT

NECTIONS.

KWS-1 into an operating station
consists briefly as follows:

one into the MIC jack (J101)
left-hand corner of front panel.

voltage cable plug into the
left rear of the PA. (See figure

Power supply interconnecting
left rear of the transmitter. See

Control cable plug into CONTROL
left of the transmitter. See

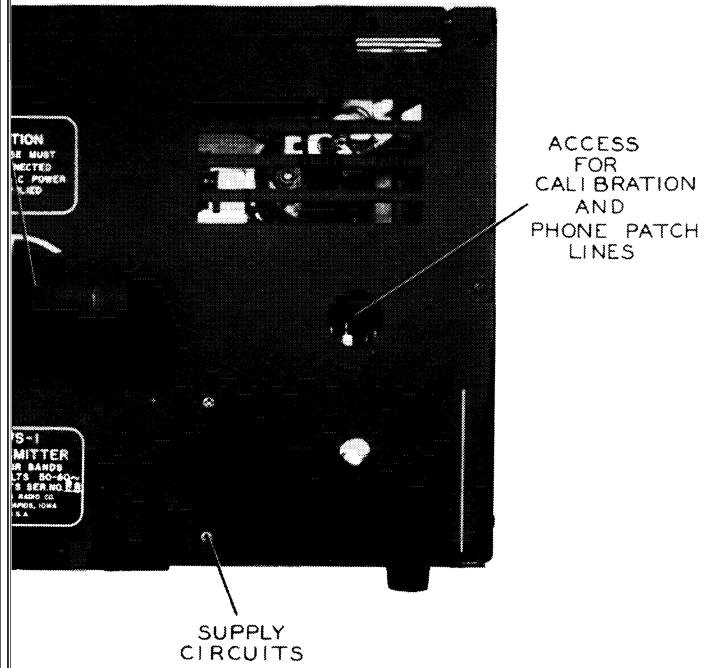
Independent cable to the receiver
antenna relay, etc. (See

hose. Be sure clamps are
tight.)

Coax line into J401 on rear of
it is recommended that either an r-f am-
plifying device be used between
antenna. It is also recommended
that a change-over relay be used.
Use an extra set of normally open
contacts surrounding the key line interlock.
This is switched by the break-in
contact of the Power Supply for operating
the relay coil. (See figure 2-3.)

Signal for the receiver can be
obtained from a coax line from the receiver
CL6 PLATE test point (J201).
Use the large hole in rear of transmitter.

R



PA Amplifier Rear Panel

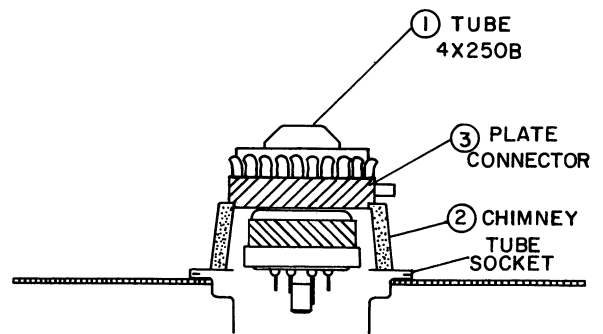


Figure 2-2. Installation of PA Tubes

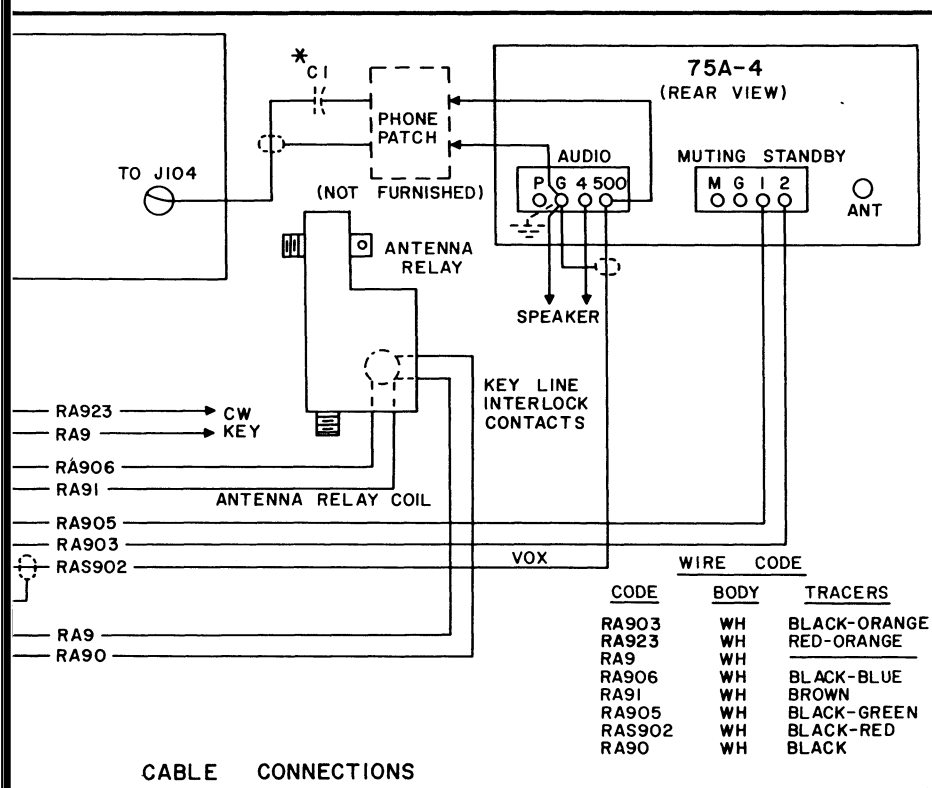
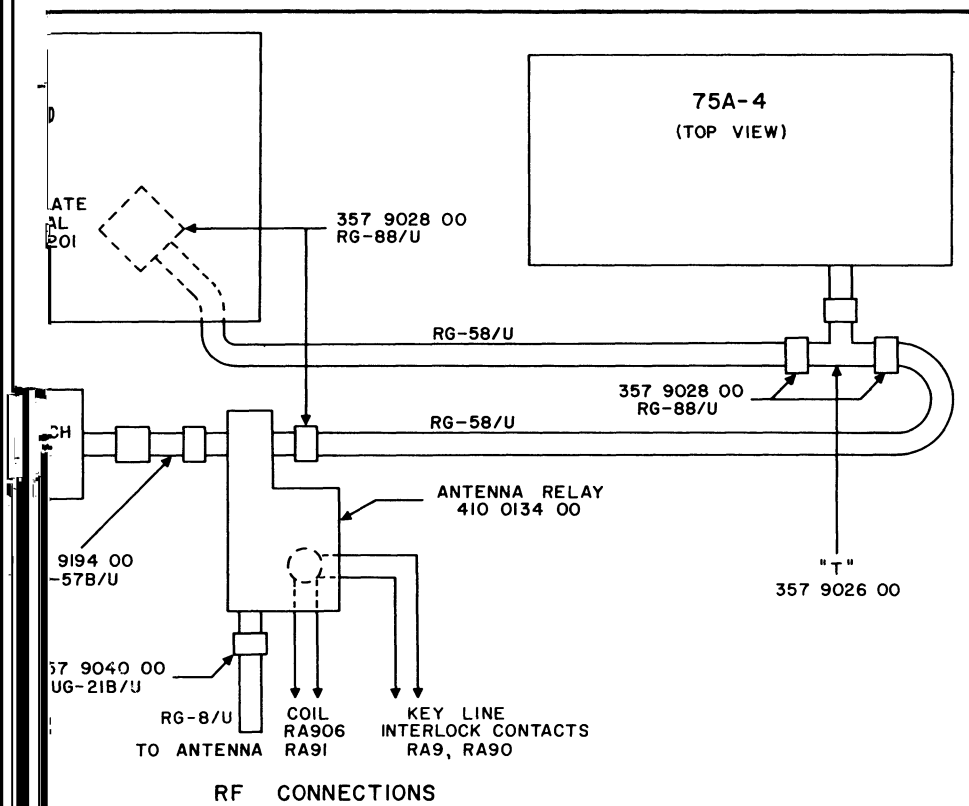


Figure 2-3. KWS-1 Connections to Associated Apparatus

and LOADING controls
use from the settings

page switch ON.

Advance the CARRIER
meter reads about midscale.

ROTATE THE PA TUNING
control.

control clockwise to

multaneously (use both
is loaded to about 150
ion.

and tuning process, the
case. This effect is
A inverse feedback.
LEVEL control so
near midscale.

PERATE switch to
mid current for midscale.

about 400 ma. Note
output.

100 ma (465 ma
watching both output
if the output ceases
read, back off the
do not try to load

now ready to use on cw.
simply backing off the
until the desired plate
current will show under
will be operating class
B, run the grid current
scale.

MULTI-
METER

VOX SPEAKER
GAIN CONTROL



ini-

SSB.
ND
ction-
rodu-
4.3.

("a"
a
rent.
ut

til
a
of

e
trace
ot be

TABLE 3-1

APPROXIMATE PA TUNING AND LOADING DIAL SETTING
(With 52-ohm Load)

BAND	FREQUENCY IN KILOCYCLES	PA TUNE		PA LOAD	
		APPROX. SETTINGS	ACTUAL SETTINGS	APPROX. SETTINGS	ACTUAL SETTINGS
80M	3,500	262		237	
	3,750	390		353	
75M	4,000	505		435	
40M	7,000	1282		1080	
	7,150	1300		1095	
	7,300	1325		1100	
20M	14,000	1795		1545	
	14,150	1800		1570	
	14,300	1810		1595	
15M	21,000	2000		1765	
	21,450	2015		1767	
11M	27,000	2080		1875	
10M	28,000	2094		1880	
	29,000	2108		1895	
	29,700	2121		1907	